



U.S. Dairy
Export Council

Ingredients | Products | Global Markets



U.S. Dairy Export Data: November 2021



Table of Contents

- I. Summary
- II. Total Milk Solids
- III. NFDM/SMP
- IV. Whey (0404.10)
- V. WPC80+
- VI. Cheese
- VII. Lactose



U.S. Dairy
Export Council.

Ingredients | Products | Global Markets



Summary



Year-To-Date Performance: January - November

Category	2019	2020	2021	'20-'21 % Change	'20-'21 Vol Change	Unit
Total Export Value	\$5,494.7	\$6,046.6	\$7,149.1	18%	\$1,102.5	Million \$
Total Milk Solids	1,681,976	1,919,680	2,140,630	12%	220,950	MT
SMP/NFDM	631,960	750,232	834,927	11%	84,695	MT
Dry Whey Products	407,167	503,850	574,472	14%	70,622	MT
<i>Whey (0404.10)</i>	365,678	450,688	514,670	14%	63,981	MT
<i>WPC80+</i>	41,489	53,162	59,803	12%	6,641	MT
Cheese	330,415	329,571	373,634	13%	44,063	MT
Lactose	348,312	350,441	364,293	4%	13,852	MT
WMP	33,974	35,433	35,330	0%	-103	MT
Butterfat	22,621	22,234	52,706	137%	30,472	MT
MPC	31,179	39,485	37,806	-4%	-1,678	MT
Infant Formula	29,861	30,042	26,059	-13%	-3,983	MT
Evap/Cond Milk	15,814	9,568	15,136	58%	5,568	MT
Casein	2,475	2,779	2,501	-10%	-278	MT
Fluid Milk/Cream	121,157	119,268	136,615	15%	17,347	000 L

Month Of Performance: November

Category	2019	2020	2021	'20-'21 % Change	'20-'21 Vol Change	Unit
Total Export Value	\$536.9	\$507.5	\$667.4	31.5%	\$159.9	Million \$
Total Milk Solids	162,942	161,706	192,278	18.9%	30,572	MT
SMP/NFDM	67,362	61,303	76,422	24.7%	15,119	MT
Dry Whey Products	38,048	48,348	48,506	0.3%	158	MT
<i>Whey (0404.10)</i>	33,347	42,911	44,503	3.7%	1,592	MT
<i>WPC80+</i>	4,700	5,436	4,003	-26.4%	-1,433	MT
Cheese	28,466	23,943	33,500	39.9%	9,556	MT
Lactose	31,952	27,376	36,584	33.6%	9,208	MT
WMP	3,856	3,820	2,043	-46.5%	-1,777	MT
Butterfat	1,621	1,594	4,725	196.3%	3,130	MT
MPC	2,732	3,317	3,530	6.4%	213	MT
Infant Formula	2,927	2,093	2,358	12.6%	265	MT
Evap/Cond Milk	1,862	778	1,087	39.7%	309	MT
Casein	276	282	179	-36.7%	-104	MT
Fluid Milk/Cream	10,894	9,520	13,095	37.6%	3,575	000 L



U.S. Dairy
Export Council.

Ingredients | Products | Global Markets

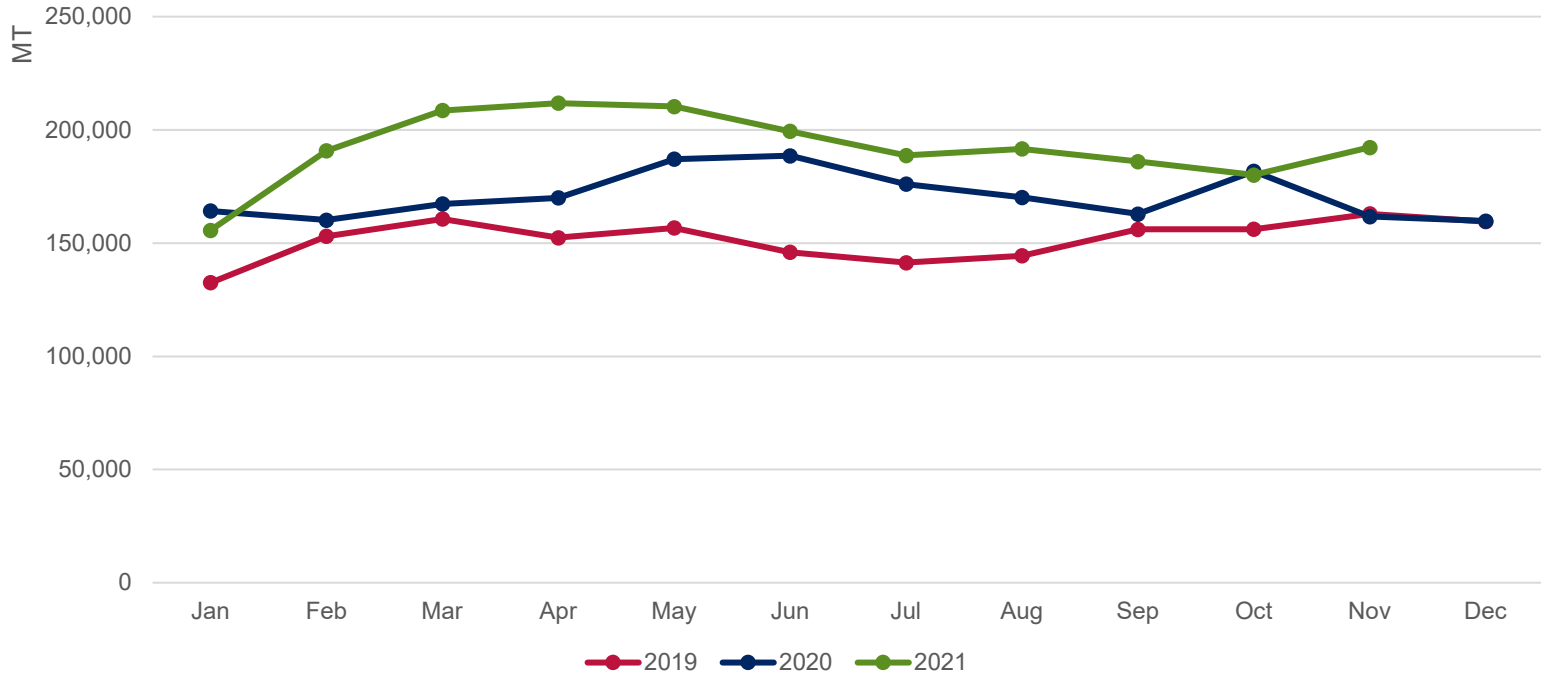


Total Milk Solids



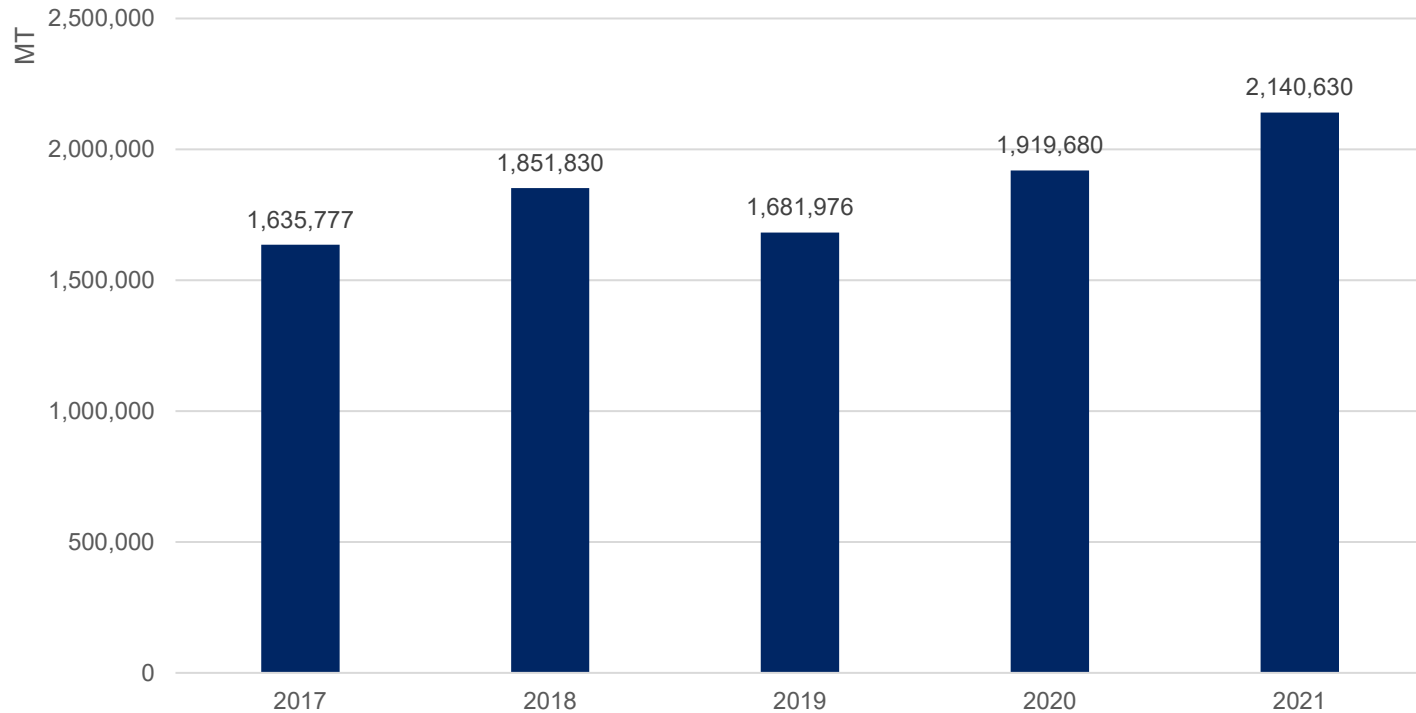
Total Milk Solids Exports

U.S. Total Milk Solids Exports: World (30-Day Months)



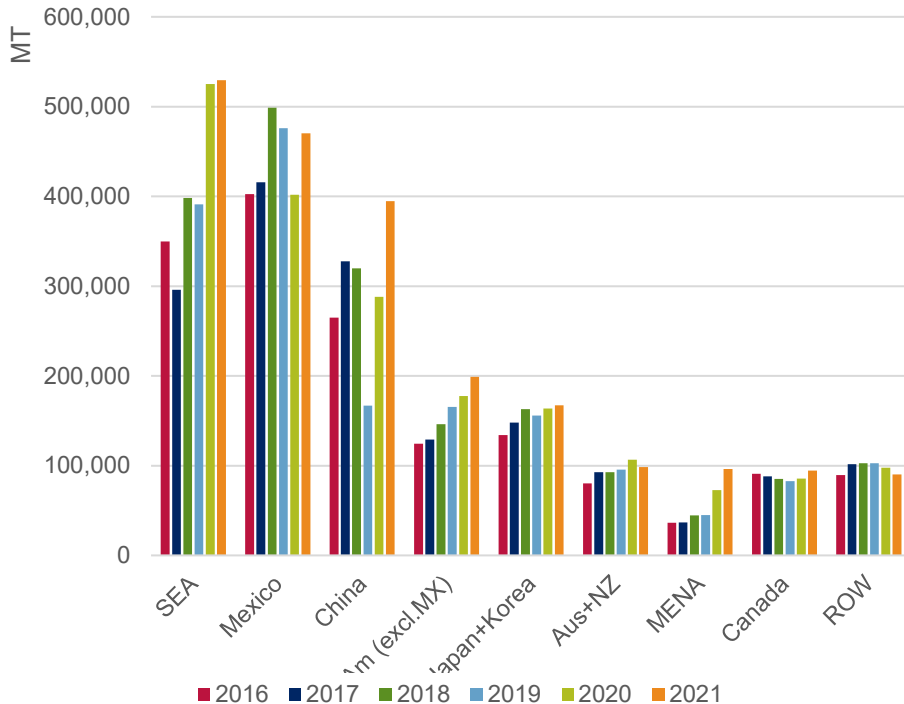
Total Milk Solids Exports

U.S. Total Milk Solids Exports: World YTD



Total Milk Solids Exports

U.S. Total Milk Solids Exports: World YTD



Total Milk Solids: Year to Date				
		1	2	3
Top Markets	World	SEA	Mexico	China
% of Total Exports		27%	21%	15%
Volume	2,140,630	529,475	470,430	394,723
YOY Change	220,950	4,190	68,373	106,545
YOY % Change	12%	1%	17%	37%

Total Milk Solids: Month Of				
		1	2	3
Top Markets	World	SEA	Mexico	China
% of Total Exports		23%	22%	18%
Volume	192,278	49,327	42,677	28,601
YOY Change	30,572	12,876	6,824	-163
YOY % Change	19%	35%	19%	-1%



U.S. Dairy
Export Council.

Ingredients | Products | Global Markets

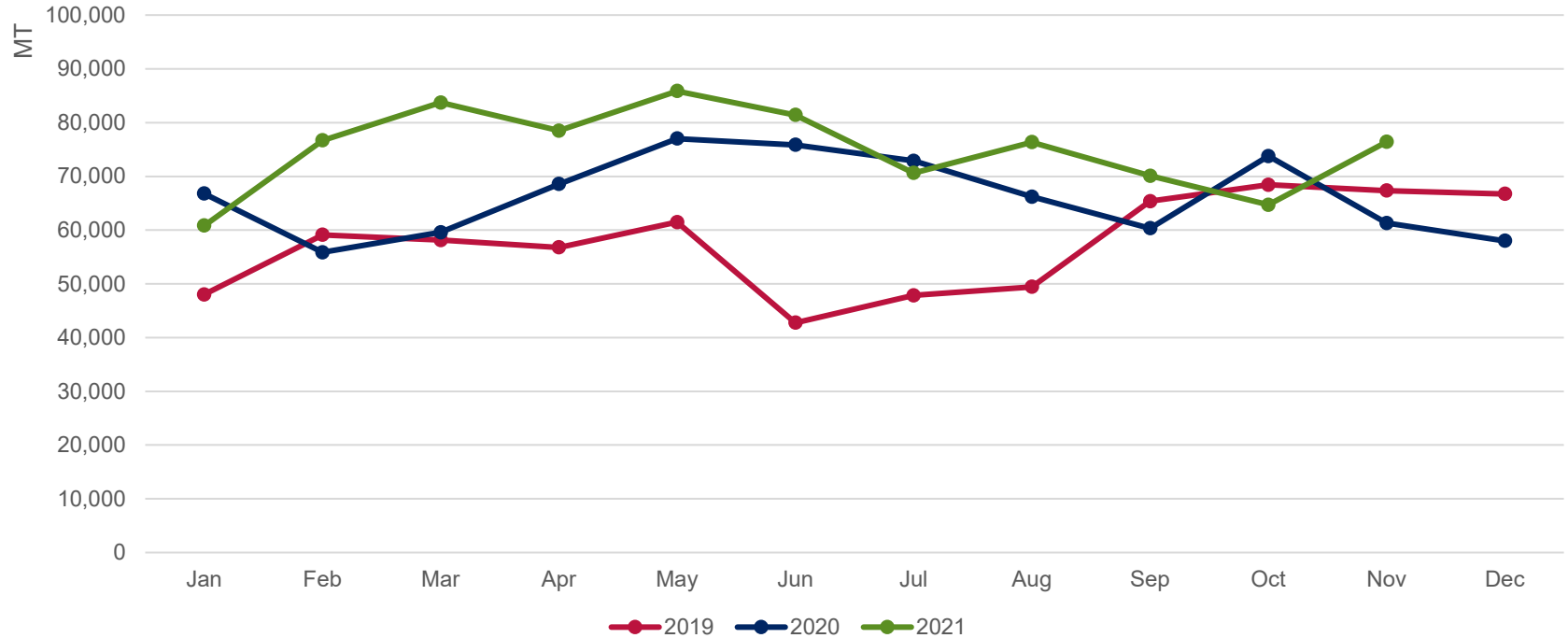


NFDM/SMP



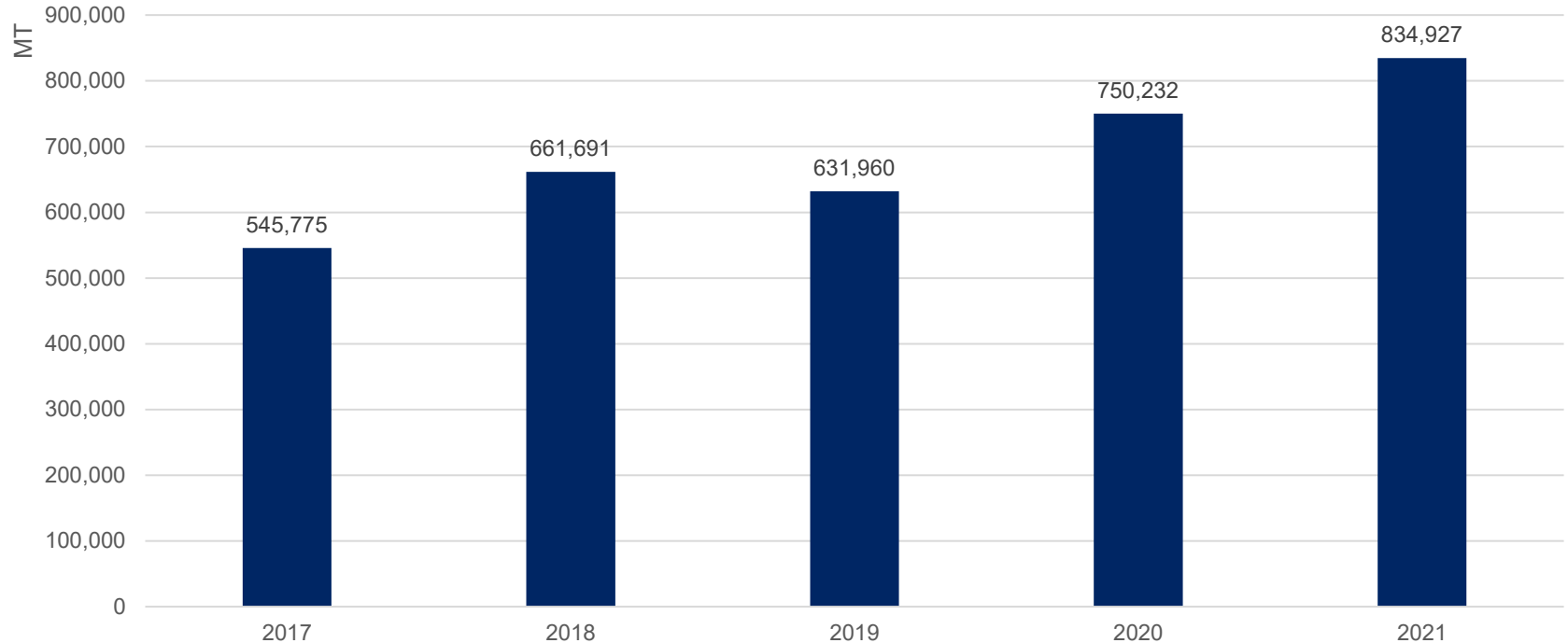
Total NFDM/SMP Exports

U.S. SMP/NFDM Exports: World (30-Day Months)



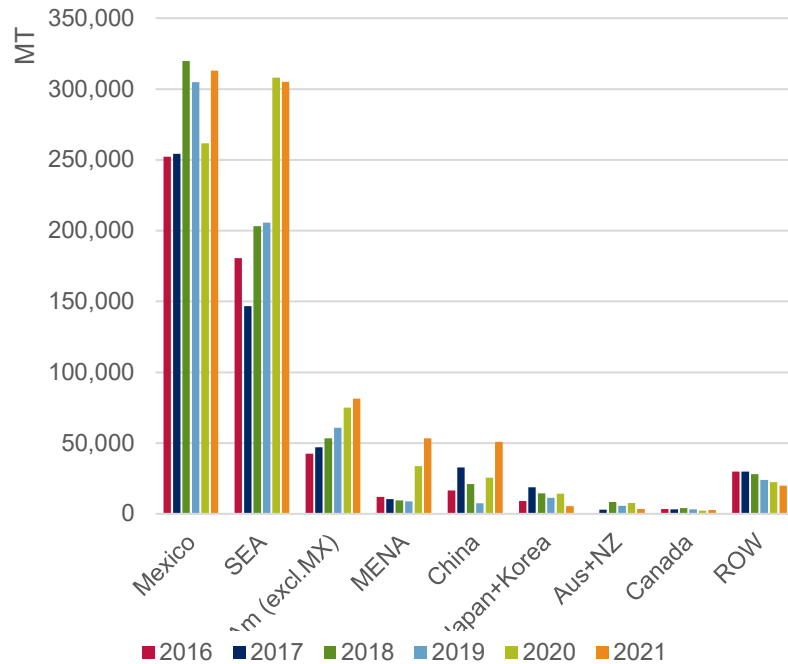
Total NFDM/SMP Exports

U.S. SMP/NFDM Exports: World YTD



Total NFDM/SMP Exports

U.S. SMP/NFDM Exports: World YTD



SMP/NFDM: Year to Date				
		1	2	3
Top Markets	World	Mexico	SEA	LatAm (excl.MX)
% of Total Exports		35%	41%	10%
Volume	834,927	312,953	305,050	81,449
YOY Change	84,695	51,311	-2,890	6,467
YOY % Change	11%	20%	-1%	9%

SMP/NFDM: Month Of				
		1	2	3
Top Markets	World	SEA	Mexico	LatAm (excl.MX)
% of Total Exports		32%	40%	14%
Volume	76,422	27,567	27,032	13,957
YOY Change	15,119	7,955	2,229	5,209
YOY % Change	25%	41%	9%	60%



U.S. Dairy
Export Council

Ingredients | Products | Global Markets

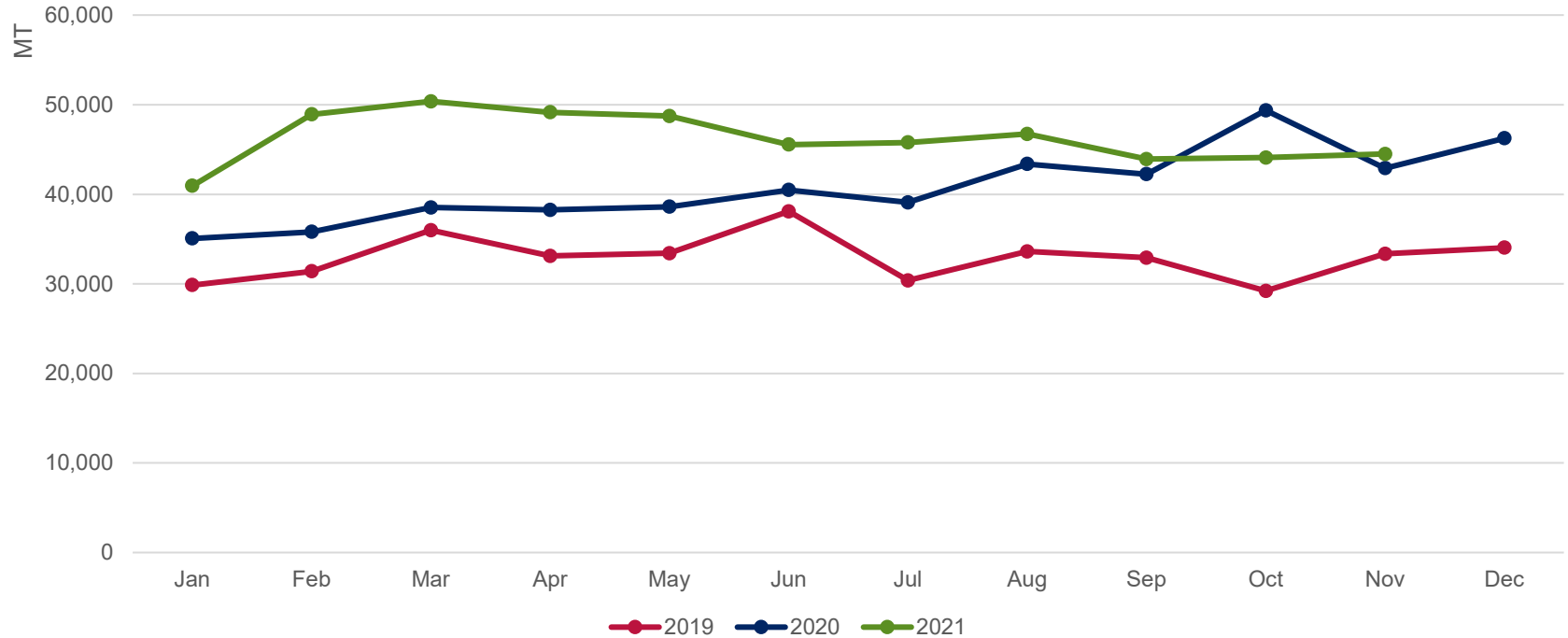


Whey Products (0404.10)



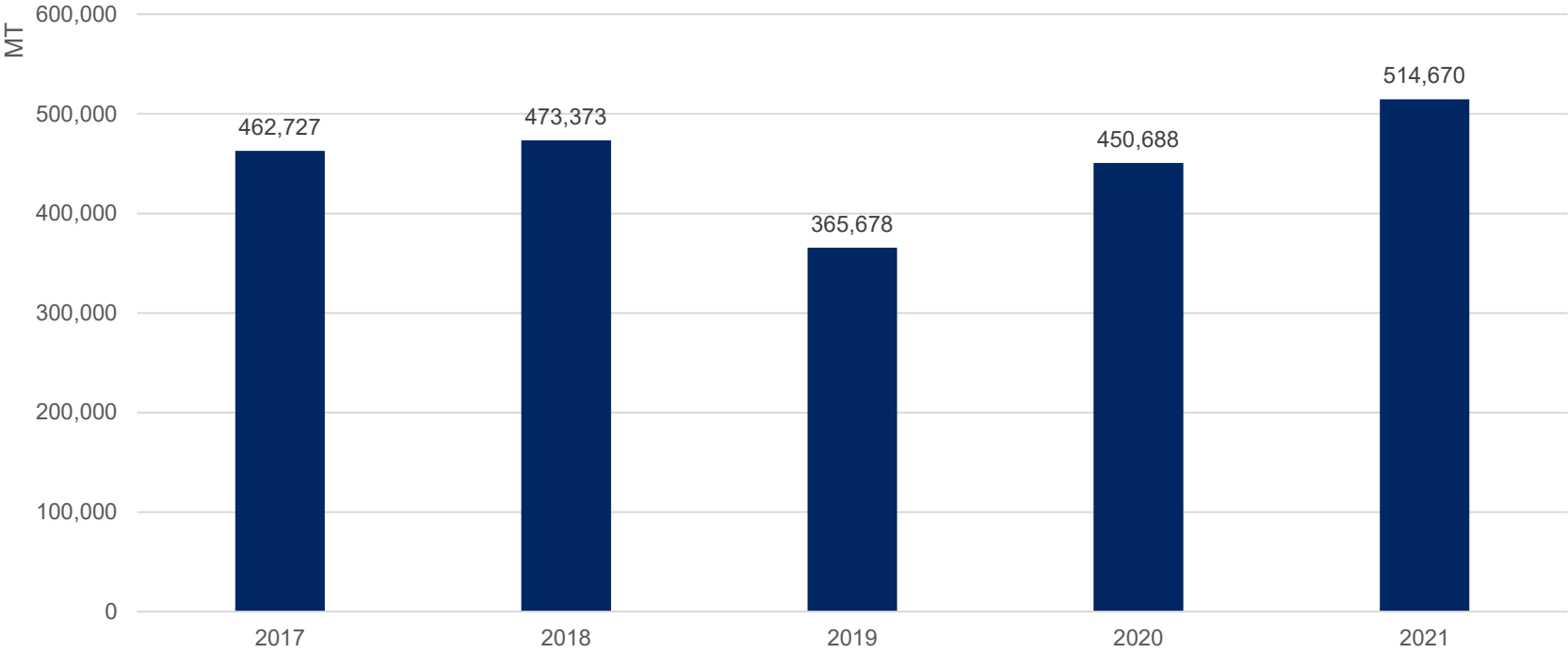
Whey (0404.10) Exports

U.S. Whey (0404.10) Exports: World (30-Day Months)



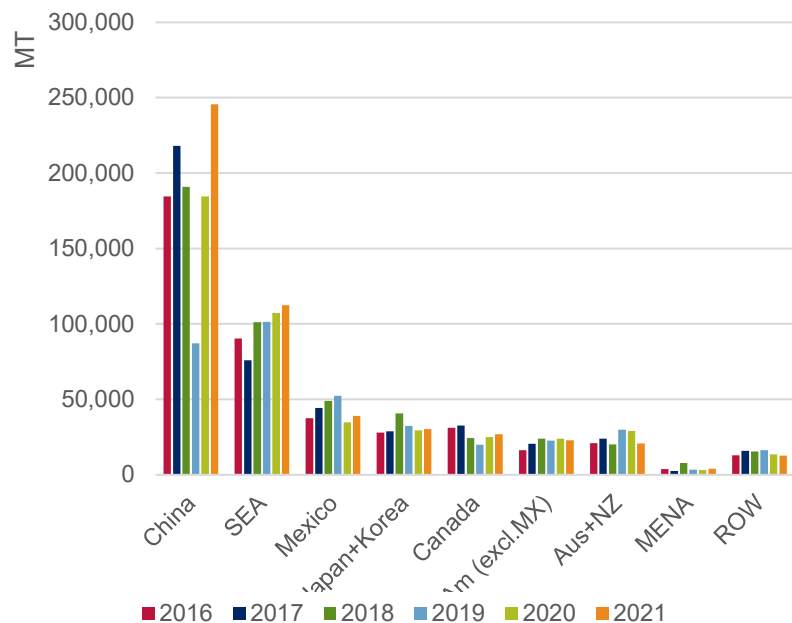
Whey (0404.10) Exports

U.S. Whey (0404.10) Exports: World YTD



Whey (0404.10) Exports

U.S. Whey (0404.10) Exports: World
YTD



Whey (0404.10): Year to Date				
		1	2	3
Top Markets	World	China	SEA	Mexico
% of Total Exports		41%	24%	8%
Volume	514,670	245,577	112,330	38,950
YOY Change	63,981	61,128	5,115	4,131
YOY % Change	14%	33%	5%	12%

Whey (0404.10): Month Of				
		1	2	3
Top Markets	World	China	SEA	Mexico
% of Total Exports		46%	19%	7%
Volume	44,503	15,673	10,853	4,370
YOY Change	1,592	-4,093	2,553	1,233
YOY % Change	4%	-21%	31%	39%



U.S. Dairy
Export Council.

Ingredients | Products | Global Markets

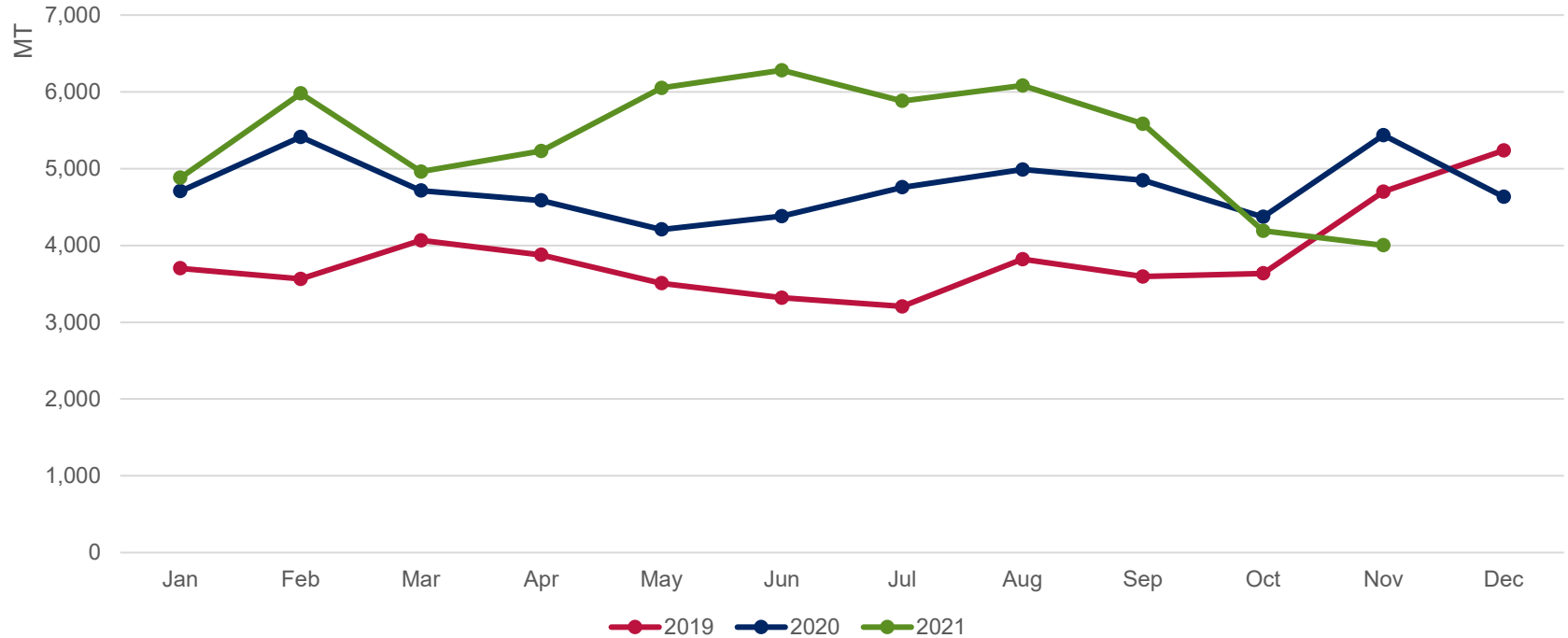


WPC80+



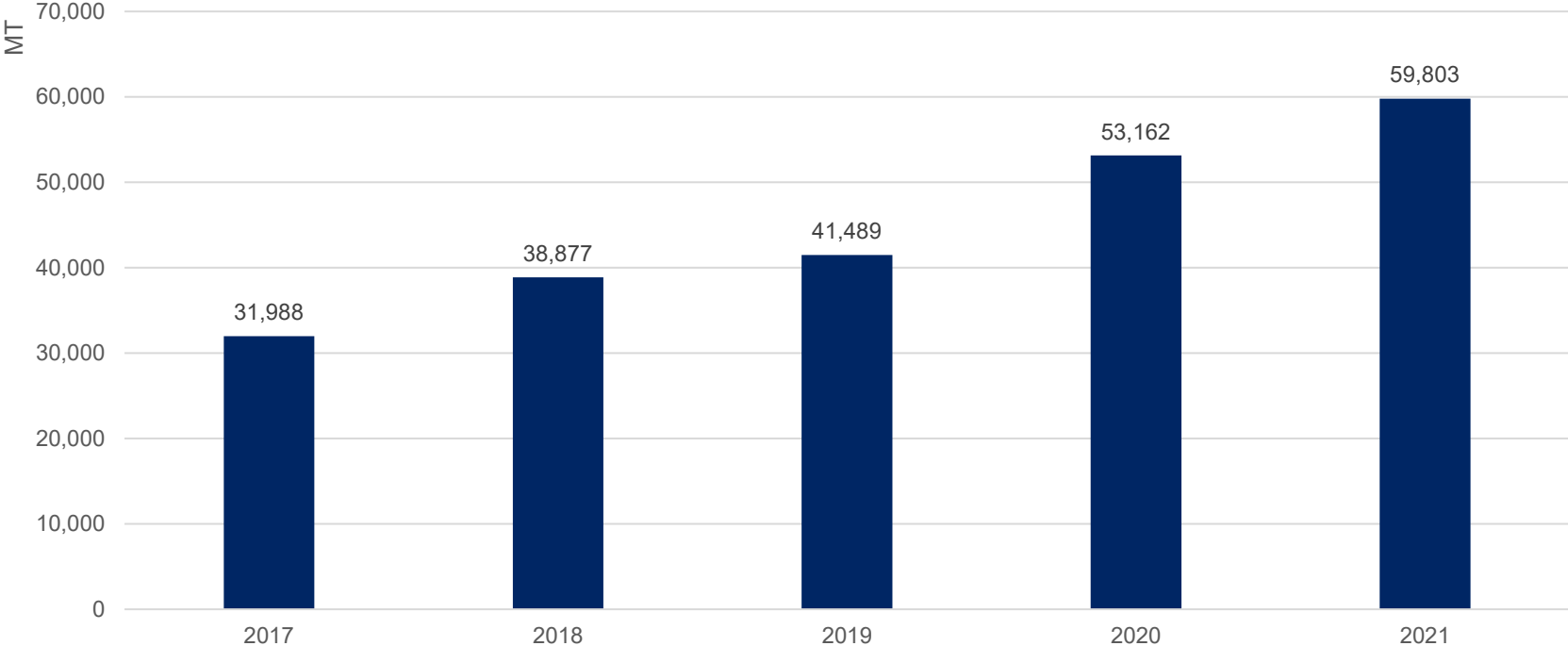
WPC80+ Exports

U.S. WPC80+ Exports: World (30-Day Months)



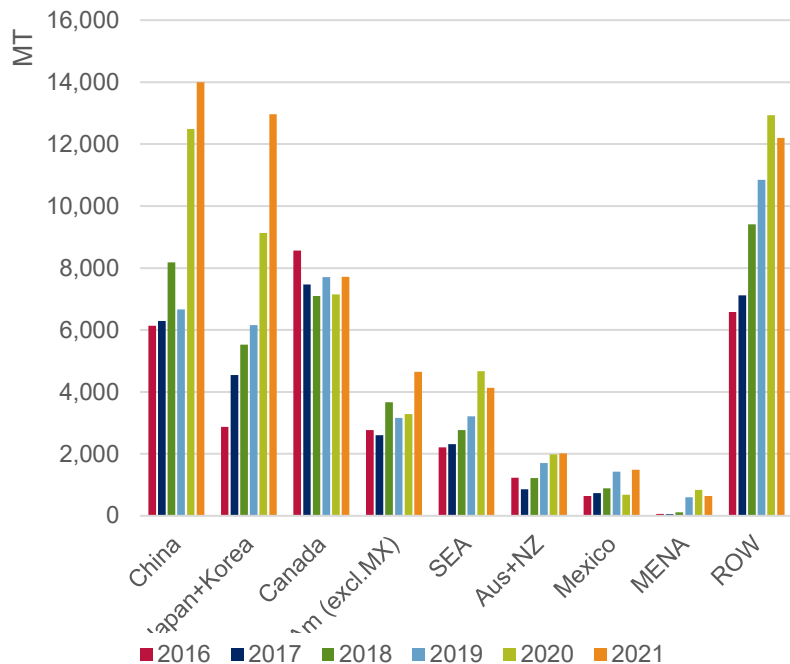
WPC80+ Exports

U.S. WPC80+ Exports: World YTD



WPC80+ Exports

U.S. WPC80+ Exports: World YTD



WPC80+: Year to Date				
		1	2	3
Top Markets	World	China	Japan+Korea	Canada
% of Total Exports		24%	17%	13%
Volume	59,803	13,999	12,963	7,717
YOY Change	6,641	1,503	3,830	571
YOY % Change	12%	12%	42%	8%

WPC80+: Month Of				
		1	2	3
Top Markets	World	Japan+Korea	China	Canada
% of Total Exports		20%	32%	13%
Volume	4,003	1,297	588	542
YOY Change	-1,433	194	-1,151	-166
YOY % Change	-26%	18%	-66%	-23%



U.S. Dairy
Export Council.

Ingredients | Products | Global Markets

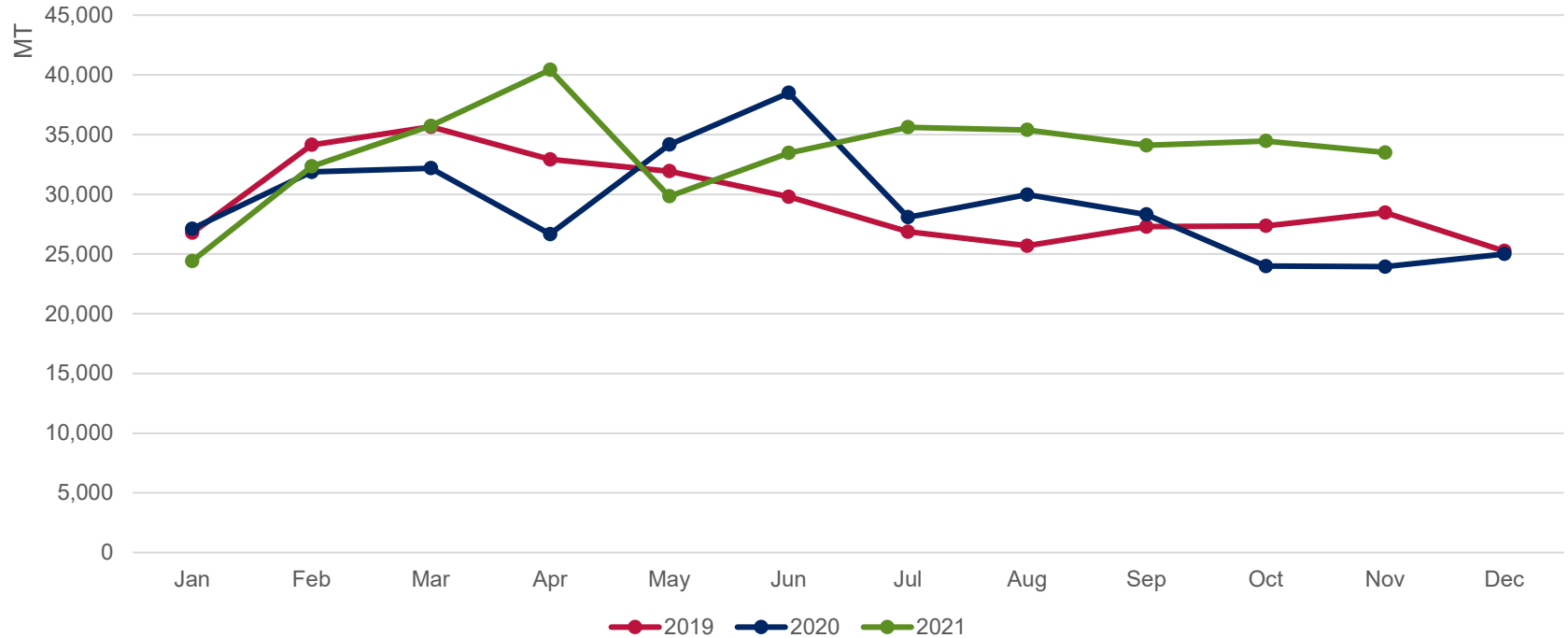


Cheese



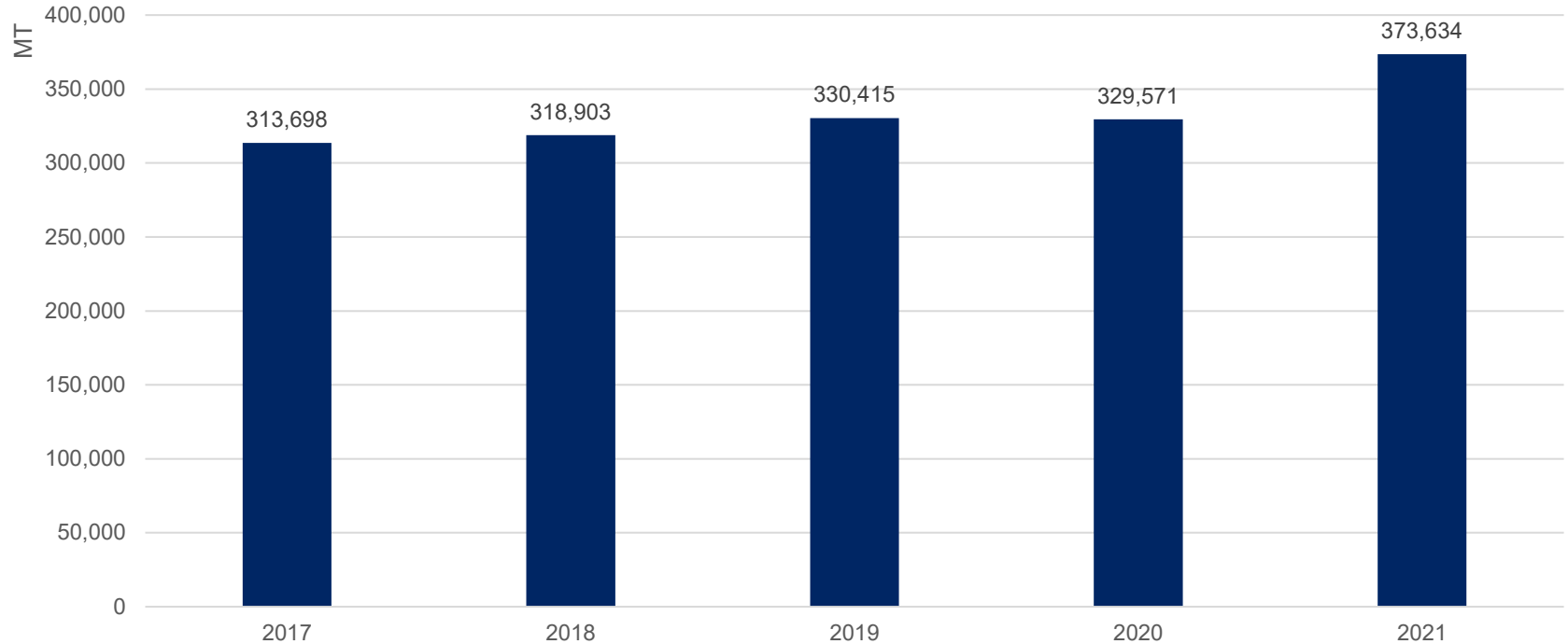
Total Cheese Exports

U.S. Cheese Exports: World (30-Day Months)



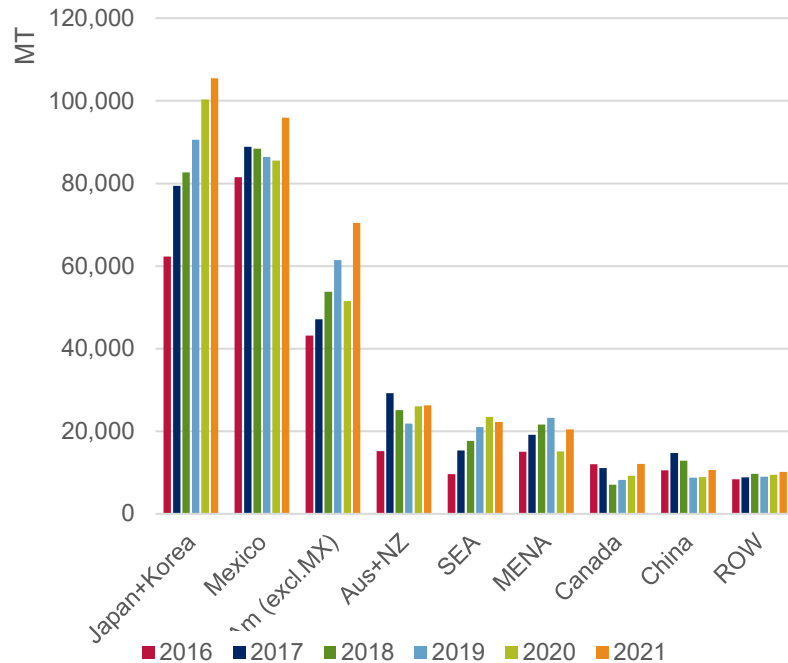
Total Cheese Exports

U.S. Cheese Exports: World YTD



Total Cheese Exports

U.S. Cheese Exports: World YTD



Cheese: Year to Date				
	1	2	3	
Top Markets	World	Japan+Korea	Mexico	LatAm (excl.MX)
% of Total Exports		30%	26%	16%
Volume	373,634	105,458	95,919	70,439
YOY Change	44,063	5,142	10,398	18,922
YOY % Change	13%	5%	12%	37%

Cheese: Month Of				
	1	2	3	
Top Markets	World	Mexico	Japan+Korea	LatAm (excl.MX)
% of Total Exports		23%	28%	21%
Volume	33,500	8,976	8,012	7,383
YOY Change	9,556	3,539	1,265	2,314
YOY % Change	40%	65%	19%	46%



U.S. Dairy
Export Council.

Ingredients | Products | Global Markets

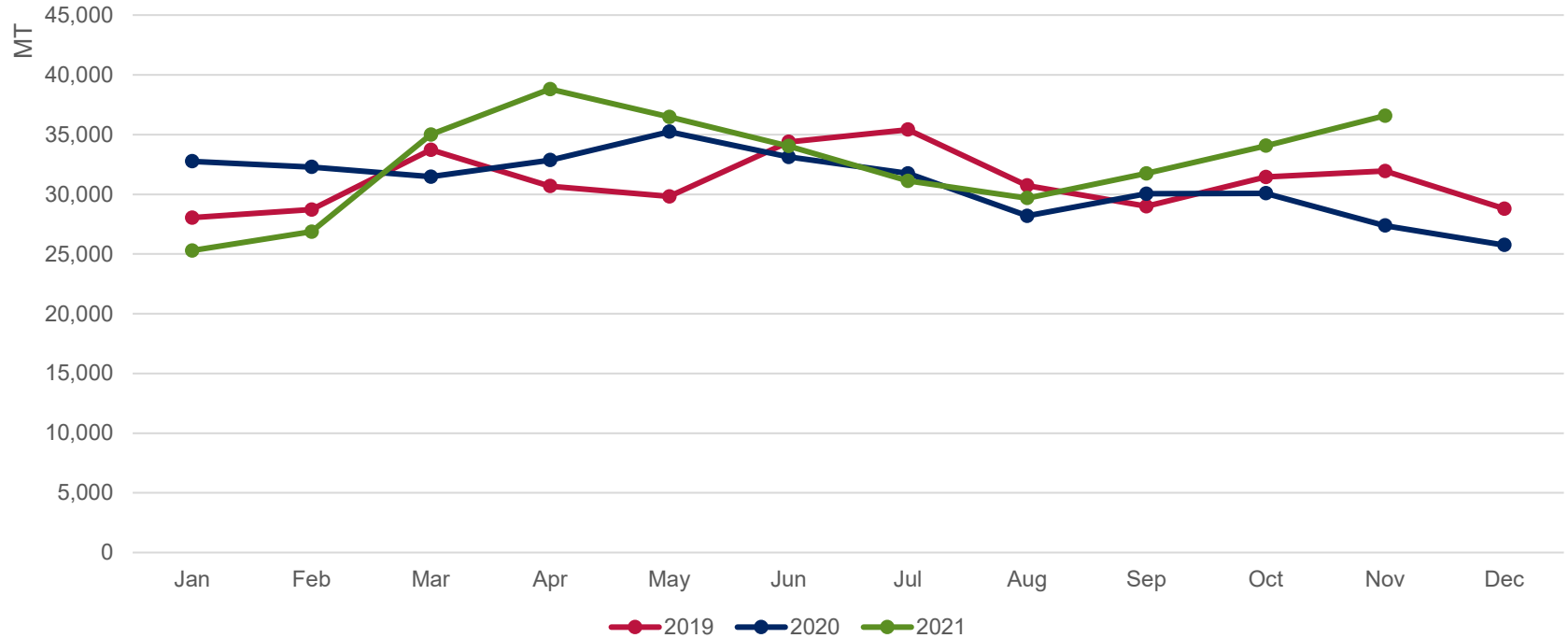


Lactose



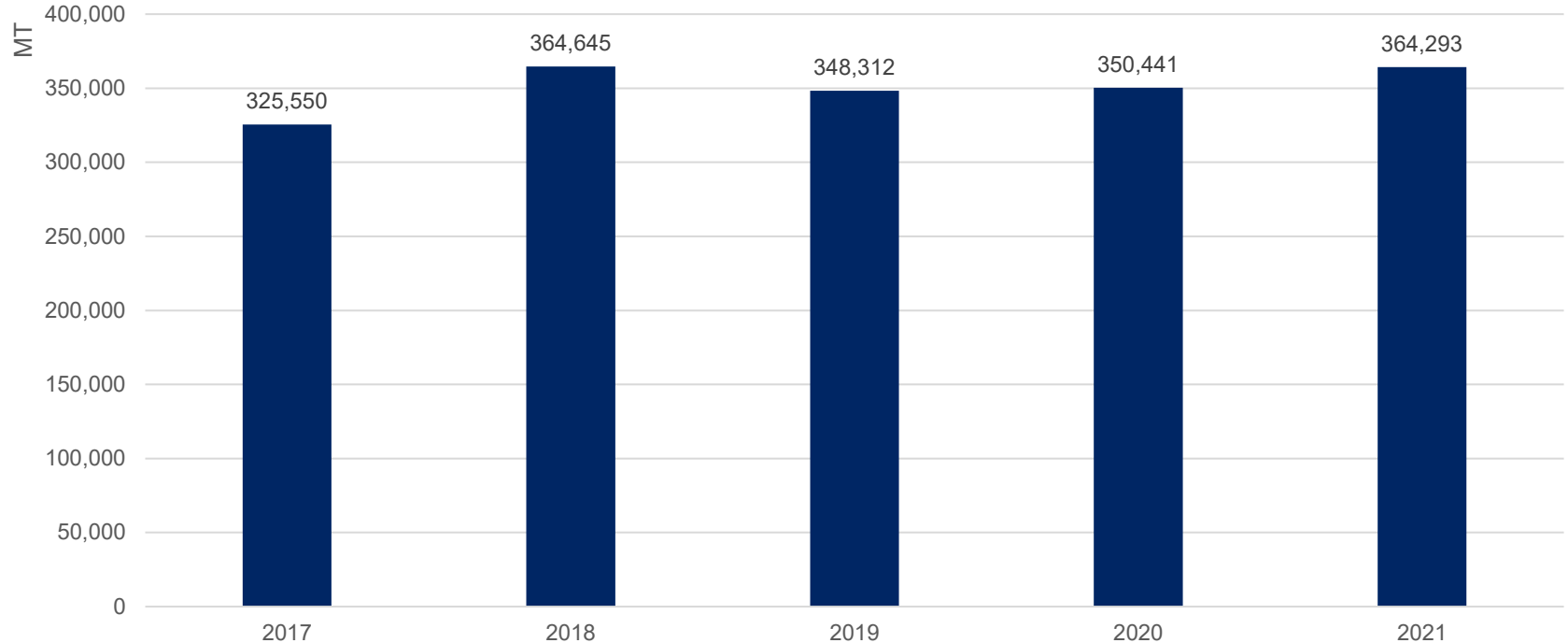
Total Lactose Exports

U.S. Lactose Exports: World (30-Day Months)



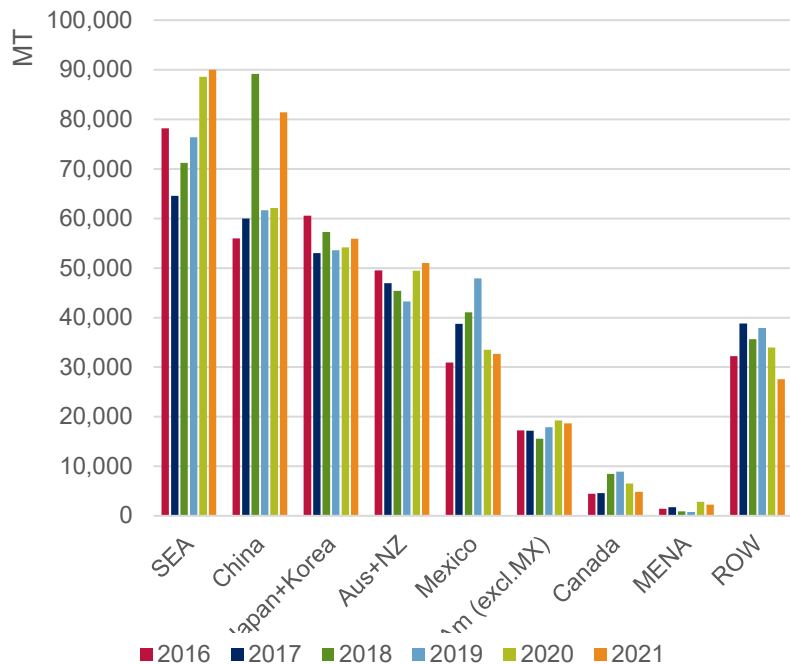
Total Lactose Exports

U.S. Lactose Exports: World YTD



Total Lactose Exports

U.S. Lactose Exports: World YTD



Lactose: Year to Date				
		1	2	3
Top Markets	World	SEA	China	Japan+Korea
% of Total Exports		25%	18%	15%
Volume	364,293	90,020	81,447	55,900
YOY Change	13,852	1,406	19,340	1,747
YOY % Change	4%	2%	31%	3%

Lactose: Month Of				
		1	2	3
Top Markets	World	SEA	China	Aus+NZ
% of Total Exports		26%	17%	16%
Volume	36,584	9,983	8,615	5,864
YOY Change	9,208	2,911	4,052	1,442
YOY % Change	34%	41%	89%	33%